



“Making a
difference by
being there ...”



The Intact Centre

Meeting Facilities and
Room Hire



Welcome to the Intact Centre

At Intact we have a number of facilities and in-house services available at very reasonable rates. There are a variety of rooms available to hire which are ideal for conferencing, meetings, training, private functions and community events.

For more information call 01772 760 760 or email: info@intact-preston.org.uk



Transport

Intact is situated on Whitby Avenue, Ingol, Preston with easy access from the M6 and M55 motorways; and the A6, with ample free on street parking. (See map on page 4.) The bus route is within 100 yards of the centre and provides two regular services from Preston bus station.

Multimedia Equipment

Apple TV
Touch screen TV
Laptop
Sound system

Room Booking Availability

Daily Hourly rate: 9.30 - 4pm
Half Day: 9.30 - 12.30 and 1pm - 4pm
Evening: 5pm - 8 pm and 6pm - 9pm
Evening Hourly Rate: 5pm - 9pm

Summary of rooms available for hire

Ground Floor:

Studio 1 and Studio 2 - One large room that has acoustic partition doors to create two smaller rooms. The whole room can accommodate up to 70 people (standing room only, with 45 seats) depending on layout, and is suitable for larger meetings, conferences or community events.

1st Floor:

The Training Room - Suitable for conferencing/ meetings for up to 18 people.

The Treatment Room - Suitable for health, holistic and well-being treatments and can accommodate up to 4 people.

The Quiet Room - Suitable for small meetings for up to 4 people and 1-2-1 sessions.

Whitby's Cafe

Our in-house cafe is open Monday-Friday between 10am - 2pm. We serve home made cooked food and speciality coffees.

Other

Outdoor seating area located in our beautiful community garden.

Fully accessible
Baby changing facilities
Kitchen facilities

Facilities Key



Flip chart and pens



Hearing Loop



Free off road parking



Disabled access



Free Wi-Fi



Lift to 1st floor



Multimedia equipment



In-house Cafe
5-Star Food Hygiene Rating

Studio 1 and Studio 2 (or as one large Multi-Use Room)



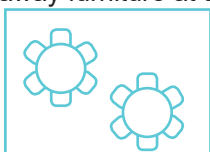
One large, light and airy room that has acoustic partition doors to create 2 smaller rooms. It is suitable for larger meetings, conferences or community events.

You will have the benefit of either two small rooms or combined for a larger space; tables; chairs; kitchen; 84" touch screen TV; sound system and laptop. Flip chart and pens are available on request.

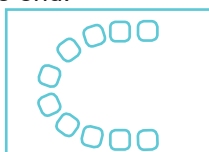
Capacity: 50-70 people (depending on layout) with seating for 45. You can arrange your seating how you like but please put away furniture at the end.



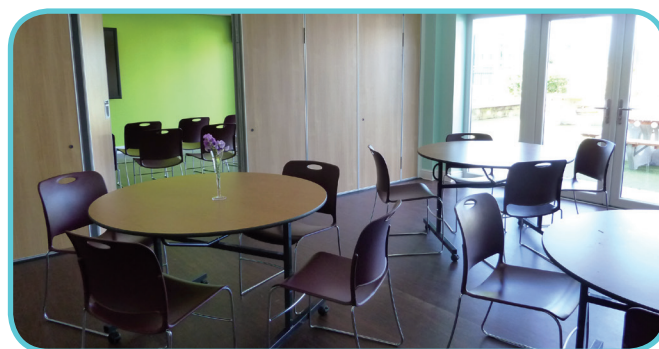
Theatre Style



Classroom Style



Training Style



Multi-Use Room	Hourly Rate (Day)	Half Day	Full Day	Hourly Rate (Evening)	Full Evening
Voluntary & Community	£15	£40	£60	£20	£50
Public & Private	£20	£50	£80	£25	£60

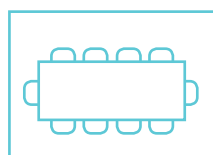
Studio 1 or Studio 2	Hourly Rate (Day)	Half Day	Full Day	Hourly Rate (Evening)	Full Evening
Voluntary & Community	£10	£25	£40	£12	£30
Public & Private	£15	£40	£60	£18	£40

The Training Room



The Training Room is suitable for training; meetings and smaller conferences. You will benefit from executive furnishings; ambient lighting; touch screen TVs; Apple TV and laptop. Flip chart and pens are available on request.

Capacity: Up to 18 people.



Boardroom Style



Training Room	Hourly Rate (Day)	Half Day	Full Day	Hourly Rate (Evening)	Full Evening
Voluntary & Community	£10	£25	£40	£15	£40
Public & Private	£15	£40	£60	£20	£50

The Treatment Room



The Treatment Room is available to hire for community based health provision; clinical treatments; holistic therapies and beauty treatments. You will benefit from a hand wash basin, therapy chair, ambient lighting and a peaceful and tranquil atmosphere.

Capacity: Up to 4 people.



Treatment Room	Hourly Rate (Day)	Half Day	Full Day	Hourly Rate (Evening)	Full Evening
Voluntary & Community	£8	£20	£30	£10	£25
Public & Private	£10	£25	£40	£12	£30

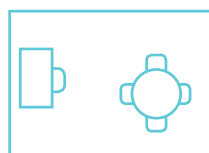
The Quiet Room



The Quiet Room is a small, quiet informal setting suitable for small meetings; interviews; 1-2-1 sessions; counselling and private consultations.

There are four chairs, a table and external phone facilities to enable your session to run smoothly and with the room being on the first floor, you will have the benefit of not being disturbed.

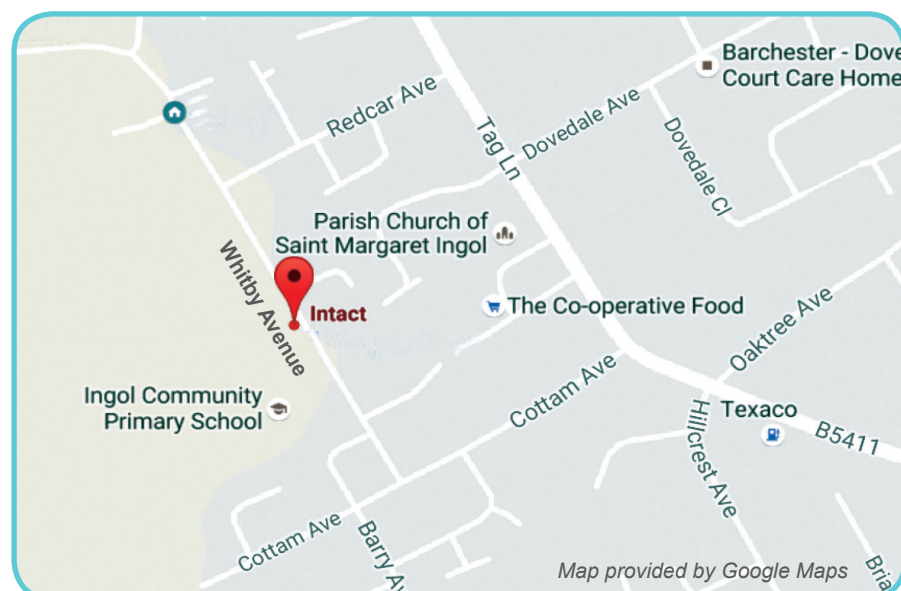
Capacity: Up to 4 people.



Coaching Style



Quiet Room	Hourly Rate (Day)	Half Day	Full Day	Hourly Rate (Evening)	Full Evening
Voluntary & Community	£8	£20	£30	£10	£25
Public & Private	£10	£25	£40	£12	£30



Intact Centre
EST 1993

The Intact Centre
49 Whitby Avenue
Ingol, Preston PR2 3YP

01772 760 760
www.intact-preston.org.uk
Intact.Centre.3
@IntactCentre

Email: info@intact-preston.org.uk



Number 49
at the Intact Centre
EST 2015

